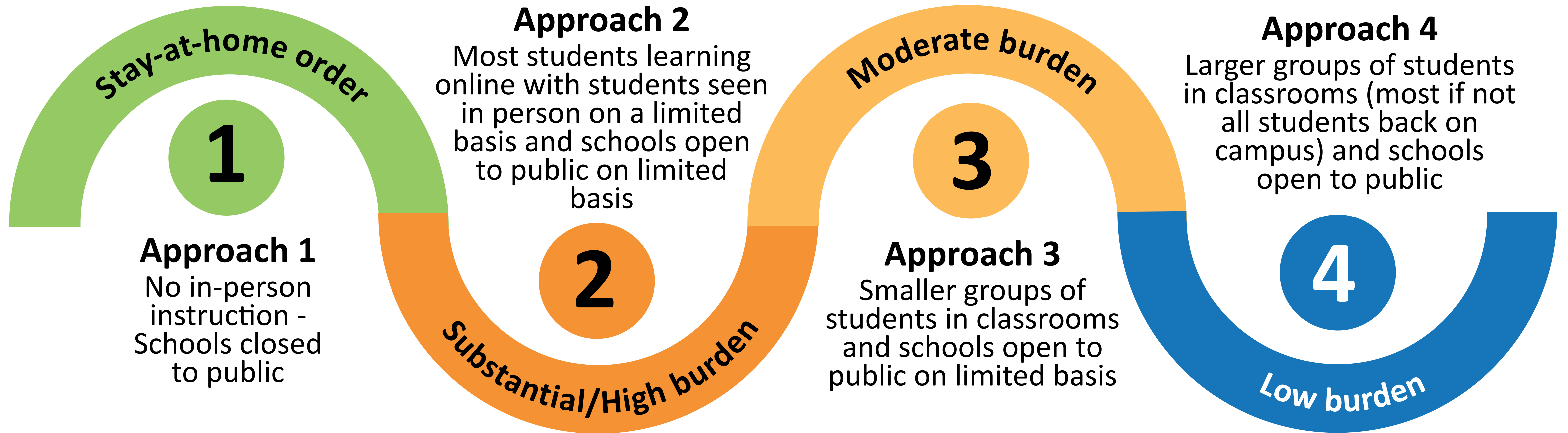


Continuum of Reopening Approaches



Students

- 1 Schools CLOSED to students, staff and public
- 2 All students learning virtually with limited in-person learning (individual or small group)
- 3 A hybrid of two days in person and three days of virtual learning (*fully virtual learning options available)
- 4 All students in person for five days of instruction (*fully virtual learning option available)

Community

- 1 School offices and classrooms CLOSED to students, staff and public
- 2 School offices open by appointment only
- 3 School offices open by appointment only
- 4 School offices open to the public during business hours

Health

- 1 No staff considerations or personal protective equipment (PPE) considerations given fully virtual learning
- 2 Limited in-person learning contingent upon:
 - Consistent availability of required PPE
 - Staff considerations (i.e., mitigation strategies and health concerns)
- 3 Hybrid learning contingent upon:
 - Consistent availability of required PPE
 - Staff considerations (i.e., mitigation strategies and health concerns)
- 4 Full return contingent upon:
 - Consistent availability of required PPE
 - Staff considerations (i.e., mitigation strategies and health concerns)

What is HCPS' plan for bringing students back to school in person? Are there criteria for opening school buildings and a timeline for evaluation?

Transitioning from a predominantly virtual approach to a hybrid approach will depend on several criteria. These include the Virginia Department of Health's "Community Transmission and Data Trends for the Central Region," combined with the data available for Henrico County, to determine when to shift to a hybrid approach to learning. The Virginia Department of Health determines a current "burden level" for coronavirus conditions, based on three factors: the case incidence rate per 100,000, the PCR (polymerase chain reaction) percent positivity, and the outbreaks per 100,000 (as well as the trends associated with these three metrics.)

The current coronavirus "burden level" will affect HCPS' evolving approach to instruction:

- **A substantial/high burden level** would align with HCPS' Instructional Approach 2. The availability of the needed personal protective equipment (PPE) and staff considerations would be used to determine whether to incorporate limited in-person instruction.
- **A moderate burden level** would align with Instructional Approach 3. Again, the availability of the needed PPE and staff considerations would be used to determine the appropriateness of transitioning to the alternating-day hybrid option.
- **A low burden level** would align with Instructional Approach 4. As with the other levels, the availability of the needed PPE and staff considerations would be used to determine whether to transition to in-person instruction for most, if not all, students.

Prior to recommending a shift in approach, HCPS will determine:

- That the necessary personal protective equipment is available to ensure the health and safety of staff and students.
- That the supply chain can sustain a four-week supply of PPE in schools.
- Whether staff members affirm that the HCPS Health Plan and risk-mitigation strategies are playing out effectively in HCPS classrooms.
- How a given recommendation will affect daily attendance rates.

The HCPS Health Committee will meet every two weeks to review the metrics and trends provided by the Virginia Department of Health. The committee will provide an overview of the data at each School Board meeting, and make a recommendation for the second nine weeks of school at the Board's Oct. 22 meeting.

